

7. Events

Month	Events
Feb.	General Meeting & Workshop
Mar.	Education Program: Basic Course
Apr.	Education Program: Advanced Course (Science and Technology)
May	Staff Workshop (Summer)
June	Academic Seminar
July	Education Program: Advanced Course (Social Sciences)
Aug.	Education Program: Annual Course
Sep.	National Library Conference: KSLA Session
Nov.	Staff Workshop (Winter)

8. Publications



KSLA Bulletin (Annual)



KSLA Newsletter (Quarterly)



Special Libraries Handbook
(Feb. 2011)



Collection of Best Practices
(Mar. 2012)

9. Photos



General Meeting & Workshop (2013)



Academic Seminar (2012)



Education Program (2013)



National Library Conference (2012)

Connecting People and Information



1. Mission

KSLA(Korea Special Library Association) was established with the purpose of information exchange, knowledge sharing, and job training of member libraries for the promotion of librarianship and the advancement of special libraries.

2. Overview

Name	KOREA SPECIAL LIBRARY ASSOCIATION 韓國專門圖書館協議會
President	Kay Sook Park (E-mail : kay@etri.re.kr)
Homepage	http://www.ksla.info
Address	KISTI (An Annex, 3F) 245 Daehak-ro, Yuseong-gu, Daejeon, 305-806, Republic of Korea Phone : +82-42-863-4496 E-mail : ksla@ksla.info

3. History

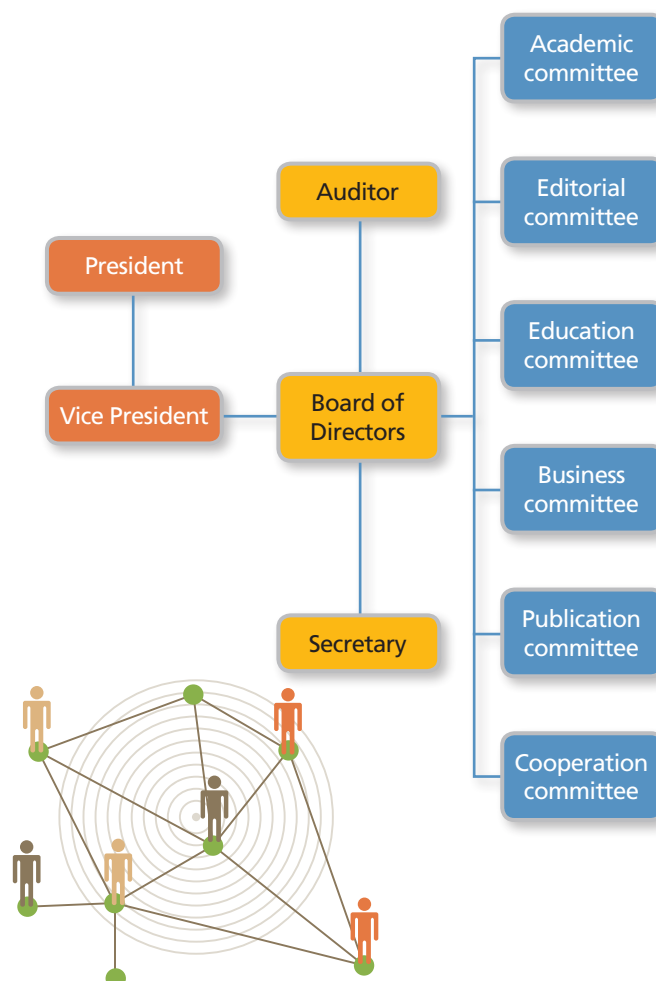
1972	STIMA was established. ※ Special libraries for science and technology
1989	KIRSA was established. ※ Special libraries for social sciences and humanities
1998	Union DB was built and ILL service was started.
Feb. 2009	STIMA and KIRSA were merged into KSLA.
July 2009	The first issue of "KSLA Bulletin" was published.
Feb. 2011	Representatives were dispatched to the ICoASL 2011.
Feb. 2011	"Special Libraries Handbook" was published.
Mar. 2012	"Collection of Best Practices" was published.
July 2013	Representatives were dispatched to the JSLA Meeting.

4. Members

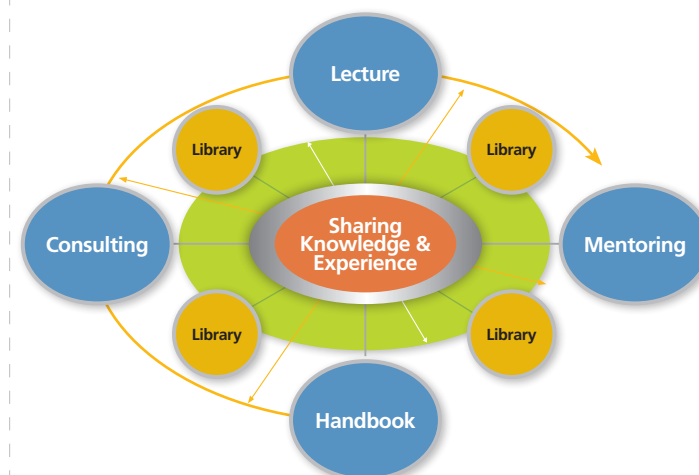
Membership	Regular Members	Special Members	Life Members
Number	115	39	2

- 1) Regular Members: Government institutes, Companies, Universities, etc.
- 2) Special Members: Publishers, Resellers, etc.
- 3) Life Members: Retired Persons

5. Organization



6. Activities



Resource Sharing	KSLA is collecting each member library's MARC data to construct a union DB and libraries are sharing resources through DDS as well as ILL services.
Education Program	<p>Basic Course is aimed at the new librarians for the acquisition of knowledge including special library's characteristics, librarian's calibre, major issues, related new technologies, establishment story of a new special library, best winner's successful story in national library evaluation, etc.</p> <p>Advanced Course is aimed at the senior librarians so that they can expand library activities as well as strengthen professionalism. There are 2 courses for science and technology and social sciences which are open to librarians in all types of libraries in cooperation with the National Library of Korea.</p> <p>Annual Course is aimed at the field librarians to share information about current topics and each library's solution.</p> <p>Commissioned Course is a customized course based on each institute's request for the training of SCI research paper writing, research ethics and research notes, utilization of patent information, etc.</p>
Mentoring Service	Mentoring services are provided to improve each librarian's capability by sharing advanced experiences and expanding knowledge between mentor and mentee among KSLA member libraries.